

# PRESERVED BOTANICAL SPECIMENS

## EUMYCOTA (Fungi)

### ASCOMYCETES

- PB0168** Preserved fruiting structures of the various “cup-fungi” (such as *Peziza*, *Aleuria*, *Otidea*, etc.), our choice.  
Jar for class of 30, each 14.45

### BASIDIOMYCETES

- PB0182** Preserved fruiting structures of various “mushrooms” including gill, pore, and tooth fungi which have the typical mushroom stipe and pileus appearance.  
Jar for class of 30, each 9.90
- PB0184** Preserved fruiting structures of Basidiomycetes other than “mushrooms”. Various types such as coral fungi, puffballs, shelf fungi, etc, our choice.  
Unit for class of 30, each 9.90

## ALGAE

### CYANOBACTERIA (Blue-Green Algae)

- PB0205** **GLOEOCAPSA:** Stratified, gelatinous colonies of cells.  
Unit for class of 30, each 9.90
- PB0225** **OSCILLATORIA:** Long, unbranched filaments.  
Unit for class of 30, each 9.90
- PB0230** **ANABAENA:** Intertwined sheathed filaments.  
Unit for class of 30, each 9.90
- PB0235** **NOSTOC:** Contorted filaments.  
Unit for class of 30, each 9.90

### CHRYSOPHYTA

#### (Golden-Brown or Yellow-Green Algae and Diatoms)

- PB0309** **VAUCHERIA:** Branching filaments.  
Unit for class of 30, each 9.90
- PB0375** **DIATOMS:** Mixed.  
Unit for class of 30, each 9.90
- PB0376** **DIATOMACEOUS:** Earth.  
1-oz bottle 3.20

### PHAEOPHYTA (Brown Algae)

- PB0420** **LAMINARIA: Kelp:** Small, complete plant, marine.  
Unit of 6 plants, each 32.25
- PB0421** **LAMINARIA: Kelp:** Small, recognizable pieces.  
Jar for class of 30, each 16.25

### RHODOPHYTA (Red Algae)



- PB0510** **CORALINE ALGAE:** Branching marine algae.  
Jar for class of 30, each 9.90
- PB0540** **POLYSIPHONIA: Tubed Weed.** Vegetative, marine.  
Jar for class of 30, each 12.00
- PB0541** **POLYSIPHONIA: Tubed Weed.** Cystocarp. Fruitlike structure developed after fertilization, marine.  
Jar for class of 30, each 12.00

### CHLOROPHYTA (Green Algae)

- PB0761** **ULVA: Sea lettuce.** Marine.  
Jar for class of 30, each 9.90
- PB0778** **SPIROGYRA:** Conjugating, unbranched filaments.  
Jar for class of 30, each 9.90
- PB0779** **SPIROGYRA:** Vegetative, unbranched filaments.  
Jar for class of 30, each 9.90



- PB0825** **CODIUM:** Dichotomous branches, marine.  
Jar for class of 30, each 9.90

## BRYOPHYTA

### Liverworts

- PB0910 MARCHANTIA:** Vegetative with gemmae cups.  
Jar for class of 30, each 9.90
- PB0911 MARCHANTIA:** Antheridial (male) plants  
Jar for class of 30, each 9.90
- PB0912 MARCHANTIA:** Archegonial (female) plants.  
Jar for class of 30, each 9.90
- PB0913 MARCHANTIA:** Sporophytic (spore-bearing, diploid generation).  
Jar for class of 30, each 9.90

### Mosses

- PB0931 MNIUM:** Antheridial (male) plants.  
Jar for class of 30, each 9.90
- PB0932 MNIUM:** Archegonial (female) plants.  
Jar for class of 30, each 9.90

- PB0933 MNIUM:** Sporophytic (spore-bearing).  
Jar for class of 30, each 9.90

- PB0935 POLYTRICHUM: Haircap moss:** Sporophytic.  
Jar for class of 30, each 9.90

## TRACHEOPHYTA

### Club Mosses

- PB0960 LYCOPODIUM:** With fruiting structures.  
Jar for class of 30, each 9.90
- PB0965 SELAGINELLA:** With strobili.  
Jar for class of 30, each 9.90

### Horse Tails

- PB0975 EQUISETUM:** Vegetative shoots.  
Unit for class of 30, each 9.90
- PB0977 EQUISETUM:** Fertile shoots.  
Unit for class of 30, each 9.90

# PRESERVED ZOOLOGICAL SPECIMENS

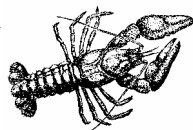
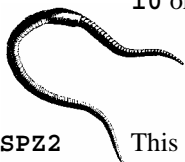
### STOROL PRESERVATIVE

Preserved specimens shipped in solution are packed in STOROL, a non-formalin based solution. STOROL is a holding solution only --- not a preservative. Contact KLM BioScientific to purchase STOROL concentrate or ready-to-use solution.

### STUDENT PACK ZOOLOGY UNITS

Units are for student use. Students can be issued sets of these specimens at the beginning of the term, eliminating time and bother for the teacher, and fixing responsibility on the student.

- SPZ1** This unit consists of 6 specimens in a glass jar: Lumbricus, Romalea, Starfish, Crayfish, Perch, and Grass Frog.  
Each set 10.10  
10 or more sets, each 8.55



- SPZ2** This unit consists of 10 specimens in a glass jar: Grantia, Hydra, Lumbricus, Crayfish, Starfish, Clam, Romalea, Beetle, Perch, and Grass Frog.  
Each set 12.55  
10 or more sets, each 10.50

### SPZ3



This unit consists of 10 insect orders, plus a spider, in a glass jar with liquid: Grasshopper, Termite, Mayfly, Damselfly, Stonefly, Earwig, Box-elder Bug, Beetle, Butterfly or Moth, and Honeybee Worker.

- Each set 9.20  
10 or more sets, each 7.80



### SPZ4



Consists of 15 insect orders, plus a spider, in a glass jar with liquid: Silverfish, Grasshopper, Springtail, Termite worker, Damselfly, Stonefly, Box-elder Bug, Cicada, Aphid, Earwig, Beetle, Moth, Blue Bottle Fly, Flea, and Honeybee Worker.

- Each set 12.00  
10 or more sets, each 11.20



### SPZ5



Consists of nine different vertebrates for comparative anatomy. This is an excellent set for a serious laboratory dissection. Ideal for a project or science exhibit. This set includes one each of the following packed in one container. Lamprey, Amphioxus, Dogfish, Perch, Necturus, single injected Grass Frog, Snake, Sparrow, and Rat.

- Each set 45.10

**SPZ7 INSECT ORDERS SURVEY SET:** Insect is contained in alcohol in a separate, clear container for safety and durability. Order normally available in the set are:

Protura	Homoptera	Blattaria
Diplura	Neuroptera	Dermaptera
Ephemeroptera	Siphonaptera	Plecoptera
Phasmida	Trichoptera	Psocoptera
Mantodea	Hymenoptera	Hemiptera
Isoptera	Collembola	Thysanoptera
Embiidina	Thysanura	Coleoptera
Zoraptera	Odonata	Diptera
Phthiraptera	Orthoptera	Lepidoptera
Each set		49.60

### PHYLUM PORIFERA

(MARINE AND FRESH WATER SPONGES)

<b>P0010</b>	<b>GRANTIA:</b> .75 inch and over. 10 Per Unit.	
	Each unit	10.25
	10 or more units, each	9.85
<b>P0011</b>	<b>GRANTIA:</b> Under .75 inch. 10 Per Unit.	
	Each unit	8.25
	10 or more units, each	7.85
<b>P0013</b>	<b>LEUCOSOLENIA:</b> Branching ascon chalk sponge.	
	Unit for ten students, each	6.35
	10 or more units, each	5.95
<b>P0014</b>	<b>LEUCOSOLENIA: Cluster.</b> Select specimens.	
	Each	6.60
<b>P0015</b>	<b>SPONGILLIDAE:</b> Fresh – water sponge.	
	Unit for ten students, each	6.05
	10 or more units, each	5.75
<b>P0016</b>	<b>ENCRUSTING SPONGE:</b> Halichondria or similar.	
	Unit for ten students, each	7.05
	10 or more units, each	6.55
<b>P0017</b>	<b>CHALINA:</b> Finger sponge.	
	Each	5.20
<b>P0018</b>	<b>CLIONA:</b> Boring sponge.	
	Each	5.05
<b>P0020</b>	<b>COMMERCIAL SPONGE:</b> 1-2" Pieces of natural sponge.	
	Each	1.00
	10 or more, each	.80
<b>P0021</b>	<b>COMMERCIAL SPONGES:</b> Cleaned and dried. Pieces up to 5 inches.	
	Each	7.60

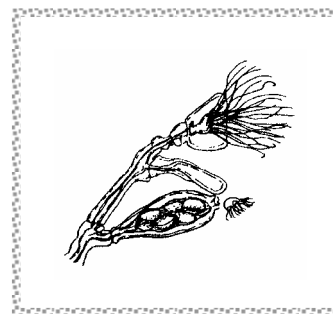
**P0033 PORIFERA COLLECTION:** One each of Grantia, Spongilla, Leucosolenia, and a piece of commercial sponge in individual containers.  
Set 7.60

### PHYLUM COELENTERATA

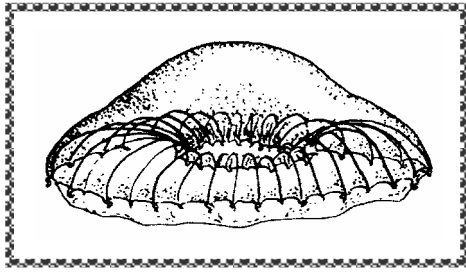
(HYDRA, ANEMONES, JELLYFISH, CORALS)

#### CLASS HYDROZOA

<b>P0055</b>	<b>HYDRA:</b> Extended and fixed. Ten Per Unit.	
	Each unit	4.05
	10 or more units, each	3.85
<b>P0056</b>	<b>HYDRA, BUDDING:</b> One or more buds.	
	Ten Per Unit	
	Each unit	4.90
	10 or more units, each	4.50
<b>P0057</b>	<b>TUBULARIA:</b> Solitary hydroids.	
	Unit for 10 students	6.85
<b>P0060</b>	<b>OBELIA:</b> Hydroids.	
	Unit for 10 students	4.85
	10 or more units, each	4.55



<b>P0061</b>	<b>OBELIA:</b> Medusa. Free-swimming form, carefully preserved.	
	Unit for 10 students	4.85
<b>P0062</b>	<b>SERTULARIA TURGIDA:</b> Symmetrical hydroid colonies.	
	Unit for 10 students	6.20
<b>P0063</b>	<b>GONIONEMUS:</b> Large bell-shaped medusae.	
	Ten Per Unit.	
	Each unit	12.50
	10 or more units, each	11.60
<b>P0063a</b>	<b>GONIONEMUS:</b> Medium size. Ten Per Unit.	
	Each unit	11.40
	10 or more units, each	10.50
<b>P0064</b>	<b>POLYORCHIS:</b> Bell-shaped medusae, prominent gonads.	
	Each	3.85
	10 or more units, each	3.45



P0065 **AQUOREA:** Large medusae.  
Each 4.60  
10 or more units, each 4.40

P0067 **VELELLA:** Sail jellyfish.  
Each 4.85

P0070 **PHYSALIA:** Portuguese Man-of-War.  
Each 12.15

P0075 **AURELIA:** Jellyfish commonly used for laboratory study. Specimens are carefully preserved and all structures intact and clearly visible. Excellent for detailed study. 3" and over.  
Each 3.85  
10 or more, each 3.00

P0076 **AURELIA:** Medium, 2-3".  
Each 3.60  
10 or more, each 2.75

P0083 **CASSIOPEIA:** Mud Jellyfish.  
Each 6.05

P0084 **MEDUSAE COLLECTION:** Five specimens in individual containers. One each of the following specimens: Aurelia, Gonionemus, Aequorea, Polyorchis, and Cassiopea.  
Set 13.25

#### CLASS ANTHOZOA

P0085 **METRIDIUM:** Sea anemone. 1.5" base and larger.  
Each 4.70  
10 or more, each 4.30



P0086 **METRIDIUM:** Sea anemone. Medium, 1-1.5".  
Each 4.05  
10 or more, each 3.85

P0090 **SEA PEN:** Small specimens.  
Each 8.80

P0096 **GORGONIA:** Pieces with polyps extended.  
Each ---

P0099 **RENILLA:** The Sea Pansy.  
Each 5.05

P0105 **BALANOPHYLLIA:** Northern Coral. Specimens in theca.  
Each ---  
10 or more, each ---

P0108 **CORAL COLLECTION:** Set of six named specimens, dried and bleached. Packaged in individual containers.  
Set ---

### PHYLUM CTENOPHORA

P0120 **PLEUROBRACHIA:** Comb Jellyfish (Sea Walnut). Large.  
Each 3.05  
10 or more, each 2.60

### PHYLUM PLATYHELMINTHES

#### (FLATWORMS)

P0140 **BDELLOURA CANDIDA:** Marine triclad.  
Each 2.60  
10 or more, each 1.60

P0145 **DUGESIA, PLANARIA:** Extra large, flattened and expanded. Unit of 10.  
Each 6.60

P0149 **MONIEZIA EXPANSA:** Sheep tapeworm.  
Each 4.10  
10 or more, each 3.70

P0155 **FASCIOLA HEPATICA:** Sheep liver fluke. Extra large specimens, carefully expanded & flattened.  
Each 3.05  
10 or more, each 2.60

### PHYLUM NEMATODA

#### (ROUNDWORMS)

P0190 **ASCARIS LUMBRICOIDES:** Roundworm of pig. Mixed sexes are supplied. 10 Per Unit.  
Each 4.80

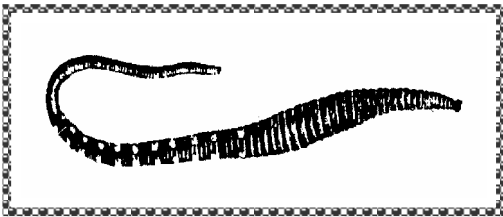
P0195 **DIROFILARIA IMMITIS:** Heartworm of dog, female.  
Each ---

P0196 **DIROFILARIA IMMITIS:** As above, male.  
Each ---

## PHYLUM ANNELIDA

### (SEGMENTED WORMS)

- P0200 LUMBRICUS:** Earthworm. Large mature specimens, carefully straightened, each with a clitellum. 9-12". Unit of ten.  
 Each 6.10  
 10 or more units, each 5.70
- P0200a LUMBRICUS TERRESTRIS (Injected):** Large mature specimens with clitellum. Blood vessels are injected with colored latex. Excellent for circulatory demonstrations.  
 Each 4.60  
 10 or more, each 4.20
- P0202 EARTHWORM COCOONS:** Hardened cocoons, each containing a developing embryo. Unit of ten.  
 Each 4.60
- P0205 NEREIS:** Clam or pile worm. Commonly studied polychaete, a group noted for rhythmic lunar breeding. Excellent for dissection and study of general and specific characteristics common to this class Extra large, 12" and over.  
 Each 3.05  
 10 or more, each 2.70  
 100 or more, each 2.30
- P0206 NEREIS:** Clam or pile worm, large, 8-12".  
 Each 2.05  
 10 or more, each 1.85  
 100 or more, each 1.75
- P0208 APHRODITE ACULEATA:** Sea mouse. Large marine annelid found in the subtidal zone buried in soft mud. Modified parapodia are prominent.  
 Each ---



- P0209 ARENICOLA CRISTATA:** Lug worm, 6-9" Mud-burrowing marine polychaete with protruding gills. Arenicola show externally subdivided segments.  
 Each ---  
 10 or more, each ---
- P0215 LEPIDONOTUS:** Scale worm.  
 Each 3.85  
 10 or more, each 3.35

- P0219 LEECH:** Species as available, 4" and over.  
 Each 3.35  
 10 or more, each 3.20
- P0220 ANNELID COLLECTION:** One each of Nereis, Lumbricus, Tubeworm, and Leech. In individual containers, labeled.  
 Set 15.05

## PHYLUM SIPUNCULIDA

### (PEANUT WORMS)

- P0225 SIPUNCULID:** Peanut worm.  
 Each ---  
 10 or more, each ---

## PHYLUM BRYOZOA

- P0230 BUGULA:** Common marine bryozoan. Large definite colonies. Unit for ten students.  
 Each 9.20
- P0232 PECTINATELLA:** Freshwater bryozoan. Unit for ten students.  
 Each 8.10

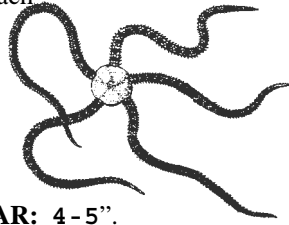
## PHYLUM BRACHIOPODA

- P0235 TEREBRATELLA:** Or similar brachiopod of the Pacific Coast. Characterized by uneven valves with hinges.  
 Each 4.40  
 10 or more, each 4.00

## PHYLUM ECHINODERMATA

- P0241 STARFISH:** 6-8", Pisaster or Asterias, as available.  
 Each 2.60  
 10 or more, each 2.25  
 100 or more, each 2.15
- P0241x STARFISH:** 6-8" injected with colored latex.  
 Each 4.85  
 10 or more, each 4.45  
 100 or more, each 4.10
- P0242 STARFISH:** 5-6", Pisaster or Asterias, as available.  
 Each 2.40  
 10 or more, each 1.60  
 100 or more, each 1.50
- P0242x STARFISH:** 5-6" injected with colored latex.  
 Each 4.35  
 10 or more, each 4.15  
 100 or more, each 3.90

- P0243 STARFISH:** 3-5", Pisaster or Asterias, as available.  
 Each 2.10  
 10 or more, each 1.80  
 100 or more, each 1.75

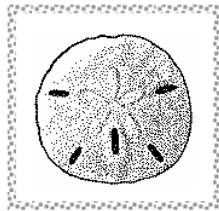


- P0247 BRITTLE STAR:** 4-5".  
 Each 2.60  
 10 or more, each 1.95

- P0248 BRITTLE STAR:** 4" and under.  
 Each 1.65  
 10 or more, each 1.35

- P0250 GORGONOCEPHALUS:** Basket star.  
 Each ---

- P0255 STRONGYLOCENTROTUS DROBACHIENSIS:** Green urchin. About 3". Pacific Coast short-spined species recommended as and excellent specimen for dissection.  
 Each 2.20  
 10 or more, each 2.15  
 100 or more, each 2.05



- P0259 DENDRASTER:** Sand dollar. Good for echinoderm comparison. Ten Per Unit.  
 Each unit 5.90

- P0265 CUCUMARIA MINIATA:** Sea cucumber, 6-12".  
 Each 2.55  
 10 or more, each 2.20

**PHYLUM MOLLUSCA**

**CLASS AMPHINEURA**

- P0300 KATHERINA:** Chiton, 2.5-3".  
 Each 3.05  
 10 or more, each 2.90

- P0301 KATHERINA TUNICATA:** Chiton, 3-4.5".  
 Each 3.80  
 10 or more, each 3.20

- P0302 CRYPTOCHITON STELLERI:** The gum shoe chiton, 6" and over.  
 Each 10.05

**CLASS GASTROPODA**

- P0309 HELIX:** Land snail. Large, carefully expanded.  
 Each 1.60  
 10 or more, each 1.25  
 100 or more, each 1.15

- P0311 ARIOLIMAX:** Giant pacific Coast slug, 4" and over.  
 Each 2.65  
 10 or more, each 2.00

- P0313 NUDIBRANCH:**  
 Each ---  
 10 or more, each ---

**CLASS PELECYPODA**

- P0315 SALTWATER CLAM:** Saxidomus or Venus, as available.  
 Each 1.85  
 10 or more, each 1.75  
 100 or more, each 1.50

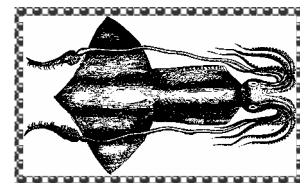
- P0320 FRESHWATER MUSSEL:** 5-6".  
 Each 2.60  
 10 or more, each 2.35  
 100 or more, each 2.05

- P0321 FRESHWATER MUSSEL:** 4-5".  
 Each 2.10  
 10 or more, each 1.65  
 100 or more, each 1.50

- P0322 FRESHWATER MUSSEL:** 3-4".  
 Each 2.00  
 10 or more, each 1.50  
 100 or more, each 1.45

- P0325 PECTEN:** The scallop.  
 Each 2.10  
 10 or more, each 1.55

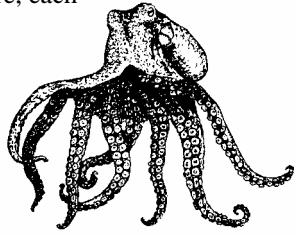
**CLASS CEPHALOPODA**



- P0331 SQUID:** Atlantic Coast, 8-12" Plain preserved.  
 Each 4.60  
 10 or more, each 4.00  
 100 or more, each 3.65

- P0331a SQUID:** Atlantic Coast, 8-12". Blood vessels injected with colored latex.  
 Each 5.85  
 10 or more, each 5.45  
 100 or more, each 5.05

- P0331 **SQUID:** Atlantic Coast, 5-8" Plain preserved.  
 Each 4.10  
 10 or more, each 3.20  
 100 or more, each 3.05



- P0340 **OCTOPUS:** Size as available.  
 Each 8.20

- P0347 **MOLLUSCA COLLECTION:** One each of Chiton, Ariolimax, Helix, Abalone, salt-water clam, fresh-water mussel, pecten and squid in individual containers.  
 Set ---

## PHYLUM ARTHROPODA

### CLASS CRUSTACEA

KLM BioScientific will supply either Procambarus, the Southern crayfish, or Pacifastacus, the Western species. They are carefully preserved and injected.

- P0383 **CRAYFISH:** Body length 4-6". Plain preserved by internal injection.  
 Each 1.60  
 10 or more, each .95  
 100 or more, each .85

- P0383 **CRAYFISH:** Body length 4-6". Arteries injected with colored latex.  
 Each 2.05  
 10 or more, each 1.35  
 100 or more, each 1.10

- P0385 **CRAYFISH:** Body length 3-4". Plain preserved.  
 Each 1.45  
 10 or more, each .90  
 100 or more, each .75

- P0386 **CRAYFISH:** Body length 3-4". Arteries injected with colored latex.  
 Each 1.65  
 10 or more, each 1.00  
 100 or more, each .85

- P0387 **CRAYFISH:** Body length 2-3". Plain  
 Each 1.10  
 10 or more, each .60  
 100 or more, each .50

- P0400 **HERMIT CRAB:** In shell.  
 Each 1.95  
 10 or more, each 1.40

- P0405 **SHORE CRAB:** 1.5-2.5".  
 Each 1.20  
 10 or more, each 1.05

- P0420 **BALANUS:** Rock or acorn barnacle.  
 Each 1.25  
 10 or more, each 1.05

- P0422 **MITELLA or LEPAS:** Goose barnacle.  
 Each 1.25  
 10 or more, each 1.05

### DIPLOPODA



- P0456 **SPIROBOLUS:** Millipede, up to 4".  
 Each 2.30  
 10 or more, each 2.00

### CHILOPODA

- P0461 **SCOLOPENDRA:** Centipede, up to 4".  
 Each 5.05  
 10 or more, each 4.75

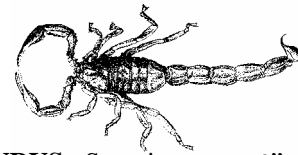
### ARACHNIDA



- P0470 **MIRANDA (Argiope):** Garden spider. Large.  
 Each 1.60  
 10 or more, each 1.40  
 100 or more, each 1.25

- P0471 **LATRODECTUS:** Black Widow spider.  
 Each 5.05  
 10 or more, each 4.75

- P0475 **TARANTULA:** Large.  
 Each 5.60



- P0480 **CENTRURUS:** Scorpion, up to 4".  
 Each 5.05  
 10 or more, each 4.75

- P0484 **DERMACENTOR:** Tick. Adult.  
 Each 1.25  
 10 or more, each 1.00



- P0490 **LIMULUS:** Horseshoe Crab, 1-2".  
 Each 3.85  
 10 or more, each 3.30

- P0491 **LIMULUS:** Horseshoe Crab, 2-3".  
 Each 4.75  
 10 or more, each 3.65

# INSECTA

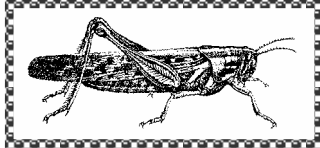
## COLLEMBOLA

P0580 **SPRINGTAILS:** Adult. Ten Per Unit.  
Each unit 7.70

## ORTHOPTERA

P0600 **KATYDIDS:** Adult. Ten Per Unit.  
Each unit 10.15

P0600 **FIELD CRICKET:** Adult. Ten Per Unit.  
Each unit 4.15

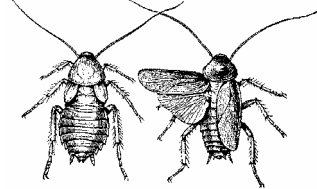


P0608 **ROMALEA MICROPTERA:** Large Lubber Grasshopper, 2-3".  
Each .85  
10 or more, each .55  
100 or more, each .45

P0609 **ROMALEA MICROPTERA:** Large Lubber Grasshopper . Trachea injected with colored latex.  
Each 2.05  
10 or more, each 1.30  
100 or more, each .90

P0614 **MELANOPLUS FEMUR-RUBRUM:** Field grasshopper. Ten Per Unit.  
Each unit 5.85

## BLATTARIA



P0615 **PERIPLANETA:** Cockroach. Adult. Ten Per Unit.  
Each unit 7.60

## PHASMIDA

P0620 **WALKING STICK:** Large specimens, about 4".  
Each 4.05  
10 or more, each 3.05

## ISOPTERA

P0640 **TERMITE:** Wood eating insect, worker. Ten Per Unit.  
Each unit 5.75

## NEUROPTERA

P0650 **ANT LION:** Adult.  
Each 2.05  
10 or more, each 1.60

P0651 **ANT LION:** Larvae. Ten Per Unit.  
Each unit 10.10

## EPHEMEROPTERA

P0662 **MAYFLY:** Adult. Ten Per Unit.  
Each unit 5.60

## ODONATA

P0680 **DAMSELFLY:** Adult. Ten Per Unit.  
Each unit 6.05

P0681 **DRAGONFLY:** Adult. Ten Per Unit.  
Each unit 10.05

## PLECOPTERA

P0691 **STONEFLY:** Adult. Ten Per Unit.  
Each unit 10.60

## THYSANOPTERA

P0700 **THRIP:** Adult. Ten Per Unit.  
Each unit 5.05

## ANOPLURA

P0710 **HUMAN LOUSE:** Adult. Ten Per Unit.  
Each unit 7.90

## HEMIPTERA

P0740 **GIANT WATER BUG:** Adult. Ten Per Unit.  
Each unit 8.00

P0742 **WATER BOATMAN:** Adult. Ten Per Unit.  
Each unit 6.60

P0744 **SQUASH BUG:** Adult. Ten Per Unit.  
Each unit 6.60

P0745 **ASSASSIN BUG:** Ten Per Unit.  
Each unit 8.10

P0750 **BOX-ELDER BUG:** Adult. Ten Per Unit.  
Each unit 8.35

## HOMOPTERA

P0755 **CICADA:** Adult. Ten Per Unit.  
Each unit 8.80

P0757 **CICADA:** Nymph. Ten Per Unit.  
Each unit 9.05

## DERMAPTERA

P0780 **EARWIGS:** Adult. Ten Per Unit.  
Each unit 5.85

## COLEOPTERA

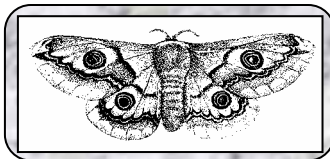
P0800 **JUNE BEETLE:** Adult. Ten Per Unit.  
Each unit 6.45

P0805 **COLORADO POTATO BEETLE:** Adult. Ten Per Unit.  
Each unit 6.35



P0807	<b>TIGER BEETLE:</b> Adult. Ten Per Unit. Each unit	7.45
P0809	<b>GROUND BEETLE:</b> Adult. Ten Per Unit. Each unit	6.05
P0811	<b>CARRION BEETLE:</b> Adult. Ten Per Unit. Each unit	6.45
P0812	<b>WATER BEETLE:</b> Adult. Ten Per Unit. Each unit	5.35
P0815	<b>ROVE BEETLE:</b> Adult. Ten Per Unit. Each unit	6.35
P0817	<b>LADY BEETLE:</b> Adult. Ten Per Unit. Each unit	4.20
P0819	<b>CLICK BEETLE:</b> Adult. Ten Per Unit. Each unit	6.35
P0821	<b>LONG HORN BEETLE:</b> Adult. Ten Per Unit. Each unit	6.85
P0825	<b>MEALWORM BEETLE:</b> Adult. Ten Per Unit. Each unit	5.35
P0827	<b>STAG BEETLE:</b> Adult. Ten Per Unit. Each unit	7.35
P0829	<b>WEEVILS:</b> Adult. Ten Per Unit. Each unit	6.45
P0830	<b>FIRELY:</b> Adult. Ten Per Unit. Each unit	6.35
P0831	<b>JAPANESE BEETLE:</b> Adult. Ten Per Unit. Each unit	6.35

**LEPIDOPTERA**



P0851	<b>MOTHS:</b> Various species. Ten Per Unit. Each unit	6.60
P0860	<b>CABBAGE BUTTERFLY:</b> Adult. Ten Per Unit. Each unit	7.85
P0863	<b>MONARCH BUTTERFLY:</b> Adult. Ten Per Unit. Each 10 or more, each	5.05 4.05

**DIPTERA**

P0937	<b>SCREW WORM FLY:</b> Adult. Ten Per Unit. Each unit	7.20
P0938	<b>SCREW WORM FLY:</b> Adult. Ten Per Unit. Each unit	7.25
P0939	<b>SCREW WORM FLY:</b> Pupa. Ten Per Unit. Each unit	7.25
P0984	<b>CULEX:</b> Adult. Ten Per Unit. Each unit	5.60
P0988	<b>MUSCA:</b> Housefly. Adult. Ten Per Unit. Each unit	3.85
P0990	<b>TABANUS:</b> Housefly. Adult. Ten Per Unit. Each unit	5.05



<b>SIPHONAPTERA</b>		
P0995	<b>CTENOCEPHALIDES:</b> Cat flea in alcohol. Ten Per Unit. Each unit	---

<b>HYMENOPTERA</b>		
P0999	<b>HONEYBEE:</b> Worker. Ten Per Unit. Each unit	3.05
P1000	<b>HONEYBEE:</b> Larva. Ten Per Unit. Each unit	4.10
P1001	<b>HONEYBEE:</b> Pupa. Ten Per Unit. Each unit	4.10

**PHYLUM CHORDATA**

<b>UROCHORDATA</b>		
P1055	<b>MOLGULA:</b> Common sea squirt. Each 10 or more, each	2.60 2.15
P1056	<b>BOLTENIA:</b> A stalked tunicate. Each 10 or more, each	3.60 3.10
P1057	<b>CYNTHIA:</b> Leathery tunicate. Each 10 or more, each	3.40 3.05
P1058	<b>CIONA:</b> Slender tunicate. Each 10 or more, each	7.85 7.10
P1060	<b>CORELLA:</b> Glassy tunicate. Each 10 or more, each	3.85 3.10

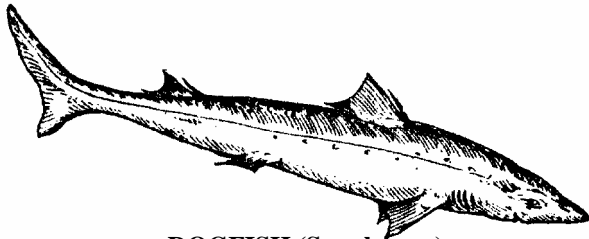
**CEPHALOCHORDATA**

<b>P1075</b>	<b>AMPHIOXUS:</b> Adults with gonads.	
	Each	2.05
	10 or more, each	1.35
	100 or more, each	1.30

**CLASS CHRONDRICHTHYES**

<b>P1096</b>	<b>SKATE:</b> Plain preserved.	
	Each	7.10
	10 or more, each	6.40

KEY TO COLORED INJECTIONS IN PRESERVED MATERIALS	
<i>Single</i>	arteries, red latex
<i>Double</i>	arteries, red latex
	veins, blue latex
<i>Triple</i>	arteries, red latex
	veins, blue latex
	hepatic portal system, yellow latex



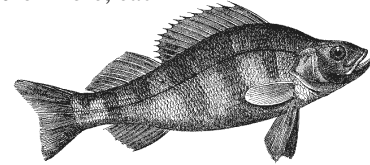
**DOGFISH (Squalus sp.)**

<b>P1100</b>	<b>DOGFISH:</b> 27" and over. Plain.	
	Each	11.60
	10 or more, each	11.40
<b>P1102</b>	<b>DOGFISH:</b> 27" and over. Double injected.	
	Each	13.30
	10 or more, each	13.10
<b>P1103</b>	<b>DOGFISH:</b> 27" and over. Triple injected.	
	Each	13.55
	10 or more, each	13.35
<b>P1110</b>	<b>DOGFISH:</b> 22-27". Plain.	
	Each	9.60
	10 or more, each	9.30
<b>P1112</b>	<b>DOGFISH:</b> 22-27". Double injected.	
	Each	11.40
	10 or more, each	11.05
<b>P1113</b>	<b>DOGFISH:</b> 22-27". Triple injected.	
	Each	12.00
	10 or more, each	11.70
<b>P1120</b>	<b>DOGFISH:</b> 18-22". Plain.	
	Each	8.85
	10 or more, each	8.70
<b>P1122</b>	<b>DOGFISH:</b> 18-22". Double injected.	
	Each	10.05
	10 or more, each	9.90

<b>P1125</b>	<b>DOG FISH HEADS:</b> Cut posterior to pectoral fin.	
	Each	---
	10 or more, each	---
	100 or more, each	---

**CLASS PISCES**

<b>P1148</b>	<b>FLOUNDER or other flat fish:</b>	
	Each	---
	10 or more, each	---



<b>P1150</b>	<b>PERCH:</b> 9-12". Plain.	
	Each	3.55
	10 or more, each	3.00
	100 or more, each	2.80
<b>P1150</b>	<b>PERCH:</b> 7-9". Plain.	
	Each	2.80
	10 or more, each	2.35
	100 or more, each	2.20
<b>P1152</b>	<b>PERCH:</b> 5-7". Plain.	
	Each	2.30
	10 or more, each	1.95
	100 or more, each	1.90
<b>P1153</b>	<b>PERCH:</b> Large, 7-9". Single injected.	
	Each	6.80
	10 or more, each	5.85
<b>P1160</b>	<b>FISH SCALE TYPES:</b> For Ten Students.	
	A: Placoid- Each	---
	B: Ganoid- Each	---
	C: Cycloid- Each	---
	D: Ctenoid- Each	---
<b>P1161</b>	<b>FISH SCALE SET:</b> Scales of four types for ten students.	
	Per set	---

<b>3Y1350</b>	<b>LID-OFF:</b> Tool for removing bucket lids is constructed of virtually indestructible plastic. Full 1.5" width for efficient operation and comfort grip. If you use plastic pails, you need Lid-Off. Does not damage containers.	
	Each	12.50

**CLASS AMPHIBIA**

<b>P1204</b>	<b>AMBYSTOMA:</b> Adult salamander.	
	Each	3.80
	10 or more, each	3.30

**P1206 AMBYSTOMA:** Larva. The axolotl stage.  
 Each ---  
 10 or more, each ---

**NECTURUS (Mud Puppy)**

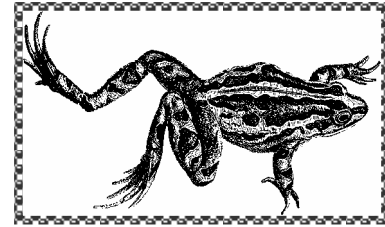
**P1210m SALAMANDER:** 8-10". Plain.  
 Each 3.80  
 10 or more, each 3.20

**P1210 SALAMANDER:** 10-14". Plain.  
 Each 4.00  
 10 or more, each 3.50

**P1212m SALAMANDER:** 8-10". Double injected.  
 Each 6.75  
 10 or more, each 5.65

**P1212 SALAMANDER:** 10-14". Double injected.  
 Each 6.95  
 10 or more, each 5.85

**P1213 SALAMANDER:** 10-14". Triple injected.  
 Each 7.35  
 10 or more, each 6.20



**GRASS FROGS (Rana pipiens supplied)**

**P1215 GRASS FROG:** 4-5" body. Plain.  
 Each 4.25  
 10 or more, each 3.85  
 100 or more, each 3.40

**P1216 GRASS FROG:** 4-5" body. Single injected.  
 Each 4.55  
 10 or more, each 3.90  
 100 or more, each 3.75

**P1217 GRASS FROG:** 4-5" body. Double injected.  
 Each 5.30  
 10 or more, each 4.30  
 100 or more, each 4.15

**P1218 GRASS FROG:** 4-5" body. Triple injected.  
 Each 5.95  
 10 or more, each 5.05  
 100 or more, each 4.85

**P1220 GRASS FROG:** 3.5-4" body. Plain.  
 Each 3.20  
 10 or more, each 3.00  
 100 or more, each 2.80

**P1221 GRASS FROG:** 3.5-4" body. Single injected.  
 Each 3.80  
 10 or more, each 3.05  
 100 or more, each 2.90

**P1222 GRASS FROG:** 3.5-4" body. Double injected.  
 Each 4.10  
 10 or more, each 3.40  
 100 or more, each 3.30

**P1223 GRASS FROG:** 3-3.5" body. Plain.  
 Each 2.35  
 10 or more, each 1.70  
 100 or more, each 1.55

**P1224 GRASS FROG:** 2.5-3" body. Plain.  
 Each 1.10  
 10 or more, each .95  
 100 or more, each .80

**BULLFROGS (Rana catesbeiana usually supplied)**

**P1226 BULLFROG:** 6-7" body. Plain.  
 Each 10.00  
 10 or more, each 8.50  
 100 or more, each 8.10

**ANIMAL KINGDOM SURVEY**

Consists of 48 specimens in labeled, individual containers. This set represents the main phyla. Substitutions may be made depending on the availability of the specimens. The animals included in this comprehensive collection are listed below.

<b>PORIFERA</b>	<b>BRACHIOPODA</b>	<b>SPUNCULOIDEA</b>
Commercial Sponge	Terebratella	Sipunculus
Grantia		
<b>COELENTERATA</b>	<b>ECHINODERMATA</b>	<b>MOLLUSCA</b>
Abietinaria	Brittle Star	Aplysia
Hydra	Starfish	Ariolimax
Aurelia	Sea Urchin	Helix
Gonionemus	Sea Cucumber	Chiton
		Clam
		Loligo
<b>CTENOPHORA</b>	<b>ARTHROPODA</b>	
Pleurobrachia	Nitella	Octopus
	Scorpion	
	Centipede	<b>CHORDATA</b>
<b>PLATYHELMINTHES</b>	Millipede	Molgula, tunicate
Fasciola hepatica	Spider	Amphioxus
Moniezia, tapeworm	Limulus	Dogfish pup
	Romalea	Perch
<b>ASCHELMINTHES</b>	Monarch Butterfly	Salamander
Ascaris	June Beetle	Frog
	Crab	Snake
<b>ANNELIDA</b>	Crayfish	Turtle
Lumbricus	Peripatus	Sparrow
Leech		Mouse
Nereis		

**AKS5:** Set of 48 specimens 152.00

P1227 **BULLFROG:** 6-7" body. Single injected.  
 Each 10.85  
 10 or more, each 9.60  
 100 or more, each 9.00

P1228 **BULLFROG:** 6-7" body. Doubled injected.  
 Each 12.70  
 10 or more, each 10.45  
 100 or more, each 9.70

P1229 **BULLFROG:** 6-7" body. Triple injected.  
 Each 13.70  
 10 or more, each 11.10  
 100 or more, each 10.75

P1230 **BULLFROG:** 5-6" body. Plain.  
 Each 8.85  
 10 or more, each 7.40  
 100 or more, each 7.05

P1232 **BULLFROG:** 5-6" body. Double injected.  
 Each 9.95  
 10 or more, each 7.70  
 100 or more, each 7.35

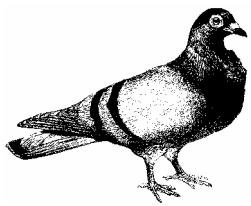
P1234 **BULLFROG:** 4-5" body. Plain.  
 Each 6.35  
 10 or more, each 5.80  
 100 or more, each 5.00

**CLASS REPTILIA**

P1310 **SNAKES:** Adult. Plain.  
 Each 6.60

**CLASS AVES**

P1400 **SPARROW:** Adult. Plain.  
 Each 4.05  
 10 or more, each 3.45



P1410 **PIGEON:** Plain.  
 Each 7.30  
 10 or more, each 6.30

P1412 **PIGEON:** Double injected.  
 Each 8.95  
 10 or more, each 7.80

P1410 **PIGEON:** Triple injected.  
 Each 10.50  
 10 or more, each 9.00

**CLASS MAMMALIA**

**RATS**



P1570 **RAT:** 7-9". Plain.  
 Each 7.35  
 10 or more, each 6.60

P1571 **RAT:** 7-9". Single injected.  
 Each 8.90  
 10 or more, each 8.10

P1572 **RAT:** 7-9". Double injected.  
 Each 9.85  
 10 or more, each 9.10

P1573 **RAT:** 7-9". Triple injected.  
 Each 10.60  
 10 or more, each 9.85



P1582 **MOUSE:** Plain.  
 Each 4.05  
 10 or more, each 3.75

KLM BioScientific features thoroughly embalmed, mature specimens utilizing the most thorough preservation with the least possible odor and toxicity. Cats are shipped in individual, heavy duty plastic bags. (Note: pregnant specimens are not always available.)

10% surcharge if sexing is required.  
 Due to supply fluctuations, please allow 90 days for delivery.

**CATS (Felis)**

P1520 **CAT:** Large, 18" and over. Plain.  
 Each 37.60  
 10 or more, each 34.85

P1520m **CAT:** Medium, 16-18". Plain.  
 Each 35.50  
 10 or more, each 33.35

P1522 **CAT:** Large, 18" and over. Double injected.  
 Each 40.10  
 10 or more, each 37.00

P1522m **CAT:** Medium, 16-18". Double injected.  
 Each 39.85  
 10 or more, each 36.85

P1522p **CAT:** Pregnant. Double injected.  
 Each 56.05

**P1523 CAT:** Large, 18" and over. Triple injected.  
 Each 45.65  
 10 or more, each 42.25

**P1523m CAT:** Medium, 16-18". Triple injected.  
 Each 43.30  
 10 or more, each 39.90

**P1523p CAT:** Pregnant. Triple injected.  
 Each ---

**FETAL PIGS**

**P1547 FETAL PIG:** 8-9". Plain.  
 Each 9.85  
 10 or more, each 9.15  
 100 or more, each 9.00

**P1549 FETAL PIG:** 8-9". Double injected.  
 Each 11.60  
 10 or more, each 10.60  
 100 or more, each 10.40

**P1550 FETAL PIG:** 9-11". Plain.  
 Each 12.60  
 10 or more, each 11.85  
 100 or more, each 11.70

**P1552 FETAL PIG:** 9-11". Double injected.  
 Each 14.10  
 10 or more, each 12.30  
 100 or more, each 12.05

**P1560 FETAL PIG:** 11-13". Plain.  
 Each 15.10  
 10 or more, each 14.10  
 100 or more, each 13.65

**P1561 FETAL PIG:** 11-13". Single injected.  
 Each 16.85  
 10 or more, each 15.50  
 100 or more, each 15.25

**P1562 FETAL PIG:** 11-13". Double injected.  
 Each 18.10  
 10 or more, each 17.70  
 100 or more, each 17.40

**SPECIAL ORDER ITEMS**

**P1565 FETAL PIG:** over 13". Plain. Please Call

**P1566 FETAL PIG:** over 13". Single injected. Please Call

**P1567 FETAL PIG:** over 13". Double injected. Please Call

**P1568 PIG UTERUS:** With embryos.  
 Each 14.10

**MAMMALIAN ORGANS**

**P1600 SHEEP EYES:**  
 Each 1.05  
 10 or more, each .95  
 100 or more, each .90

**P1603 BEEF EYES:**  
 Each 2.40  
 10 or more, each 2.15  
 100 or more, each 1.50

**P1605 SHEEP HEART:** Aorta attached.  
 Each 4.05  
 10 or more, each 3.70  
 100 or more, each 3.60

**P1606 SHEEP HEART IN PERICARDIUM:**  
 Each 7.10  
 10 or more, each 6.45

**P1610 SHEEP PLUCK:** Heart, lungs, aorta and trachea.  
 Each 9.05  
 10 or more, each 8.25

**P1611 SHEEP KIDNEY:** Plain.  
 Each 4.20  
 10 or more, each 3.70

**P1613 SHEEP KIDNEY:** Double injected.  
 Each ---  
 10 or more, each ---

**P1614 SHEEP KIDNEY:** Triple injected.  
 Each ---  
 10 or more, each ---

**P1615 SHEEP BRAIN:** Roots of cranial nerves, optic cross, and pituitary. Intact.  
 Each 7.60  
 10 or more, each 7.40  
 100 or more, each 7.25

**P1616 SHEEP HALF BRAIN:** Cut longitudinally.  
 Each 5.60  
 10 or more, each 5.40

**NOTE:** Flushing body cavity of preserved specimens with water will substantially reduce residual concentration of embalming fluid and odors.

**NOTE:** Prices are accurate at the time of catalog publication and subject to change without notice.