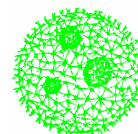


BioScientific

8888 Clairemont Mesa Blvd. Ste D
San Diego, CA 92123



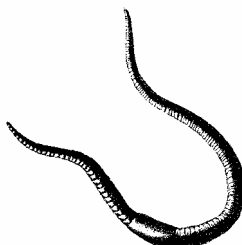
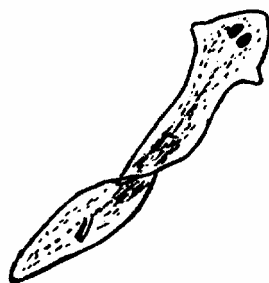
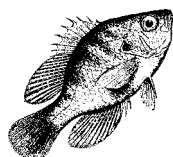
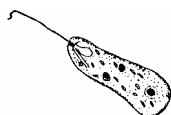
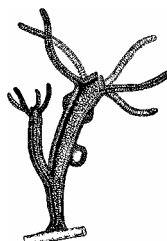
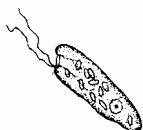
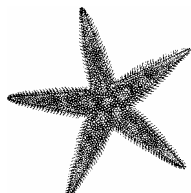
BIOLOGY SUPPLIES CATALOG 2004 / 2005

Protozoa Cultures
Living & Preserved Insects
Bacteria Cultures / Aids
Living & Preserved Algae
Aquarium Supplies / Plants
Preserved Zoological Specimens
Anatomical Charts, Models, & Skeletons
Resource / Dissecting Books
Owl Pellets
Magnifiers
Microscopes
Dissecting Equipment
Entomology Equipment
Chemical / Chemistry Equipment
Plastic & Glassware
Prepared Microscope Slides
Equipment Rental
Mail Orders / Special Orders

858 - 571- 5562 / Fax: 858 - 571- 5587

website / e-mail - www.klmbio.com

Hours: Mon – Fri 8:30am – 5:00pm
Saturday by appointment



KLM BIOSCIENTIFIC

8888 Clairemont Mesa Blvd. Ste D
San Diego, CA 92123
Ph#: (858) 571-5562 Fax: (858) 571-5587
Store Hours: M-F 8:30-5:00pm Sat: By Appointment

SHIPPING & ORDERING INFORMATION

To assure correct shipments, please designate catalog number, quantity, size, and item description. Always indicate required delivery date for living/perishable items.

PRICES

Prices are accurate at the time of catalog publication and subject to change without notice. Shipped orders under \$25.00, will be assessed a \$5.00 small order service charge.

TERMS

KLM BioScientific offers terms of 30 days net to customers with established credit. Invoices not paid net 30 will be charged a 1-1/2 percent service charge, not less than 50 cents per month.

TRANSPORTATION

Shipments are made by DHL, UPS and US Postal Service. Orders are forwarded with consideration for the nature of the material, delivery time, destination, and shipping costs.

DELIVERY

Most items are stocked for prompt shipment. Please include delivery dates when necessary, otherwise orders will be shipped immediately. When your material arrives, unpack all cartons carefully and check the contents against the packing slip. In the case of visible or concealed damage, retain the packing material and broken pieces in their original containers. Request inspection by the freight agent and send his report directly to KLM BioScientific. In most cases satisfactory adjustments will be made immediately. When circumstances dictate that materials be returned for adjustment, repair, or replacement, please contact us first and we will supply the necessary information to assure correct handling. Please do not return merchandise without prior notification to our Customer Service.

CUSTOMER SERVICE

If possible, please call ahead for office pick-ups. Orders must be placed before 1:00pm. Orders placed after 1:00pm and needing to be shipped that day, will be subject to an additional "emergency order charge" of \$10.00 plus regular shipping charge. Orders may be placed by Phone or Fax. Please furnish a purchase order number, shipping and billing addresses, and the name of an authorized purchaser.

GUARANTEE

Notify our office within 48 hours if living materials or frogs are received in poor condition or if there is any shortage and within one week for preserved materials and equipment. Failure to do so will disallow any credit or replacement.

LIVING ZOOLOGICAL CULTURES & SPECIMENS

PROTOZOA

L0001 AMOEBA PROTEUS: This amoeba is used in general Biology and Zoology courses to illustrate the structure of amoebae, and for the study of amoeboid locomotion. Other amoebae are either too small or atypical in structure.

Jar for class of 30, each 5.30

Four or more jars, each 4.05

L0002 PELOMYXA CAROLINENSIS (Chaos Chaos): An Amoeba much larger than Amoeba Proteus.

Jar for class of 30, each 6.60

Four or more jars, each 5.05

L0004 CONJUGATING PARAMECIUM MULTIMICRONUCLEATUM: Two cultures of opposite mating types, with instructions.

Jars for class of 30, set 12.45

L0005 PARAMECIUM MULTIMICRONUCLEATUM Characterized by a single macronucleus and 3 or 4 micronuclei. It is larger than Paramecium caudatum. The most commonly used ciliate.

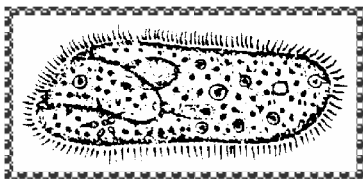
Jar for class of 30, each 5.20

Four or more jars, each 4.00

L0006 PARAMECIUM CAUDATUM: Characterized by a massive macronucleus and a compact micronucleus.

Jar for class of 30, each 5.20

Four or more jars, each 4.00



L0007 PARAMECIUM BURSARIA: This ciliate is green in color due to presence of the green alga, Zoochlorella an excellent example of symbiosis.

Jar for class of 30, each 5.20

Four or more jars, each 4.00

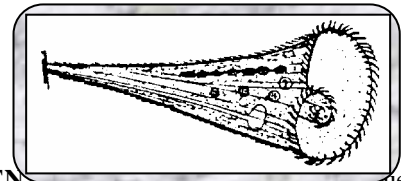
L0008 CONJUGATING PARAMECIUM BURSARIA: Two pure live cultures of opposite mating types are provided. Generous quantities of Paramecia are supplied in each unit. An instruction leaflet is enclosed with each order giving instructions for producing conjugation.

Jars for class of 30, set 9.50

L0009 PARAMECIUM AURELIA: This small species has a macronucleus and two micronuclei.

Four or more jars, each 4.00

Jar for class of 30, each 5.20



L0013 STENTOR COERULEUS: A large ciliate.

Jar for class of 30, each 5.20

Four or more jars, each 4.00

L0014 VORTICELLA: A stalked ciliate.

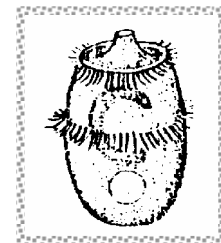
Jar for class of 30, each 5.20

Four or more jars, each 4.00

L0015 BLEPHARISMA: A large rose-colored ciliate.

Jar for class of 30, each 5.20

Four or more jars, each 4.00



L0016 DIDINIUM: Demonstration of Predatory feeding. Culture will include Paramecium as food source.

Jar for class of 30, each 6.55

Four or more jars, each 5.05

L0017 SPIROSTOMUM: An elongated and cylindrical protozoan.

Jar for class of 30, each 5.20

Four or more jars, each 4.00

L0023 PERANEMA: An easily studied flagellate even under low power as it is slow-moving and does not rotate as it swims. The large flagellum is easily observed.

Jar for class of 30, each 5.20

Four or more jars, each 4.00

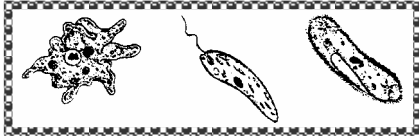
L0025 EUGLENA: The most commonly used flagellate.

Jar for class of 30, each 5.20

Four or more jars, each 4.00

L0032 CHILOMONAS: A good food organism for many Protozoa as well as invertebrates.
 Jar for class of 30, each 5.20
 Four or more jars, each 4.00

L0050 MIXED PROTOZOA: Five or more forms including Paramecium, Peranema, Amoeba, and others. Mixed culture, our choice.
 Jar for class of 30, each 6.85
 Four or more jars, each 5.25



L0051 SET OF PROTOZOAN CULTURES: Amoeba, Euglena, and Paramecium for delivery on the same date. Individual cultures.
 Jar for class of 30, set 13.85
 Four or more sets, each 10.65

L0052 SET OF FLAGELLATES: Five individual cultures, our choice, from list of: Chilomonas, Euglena, Peranema, Chlamydomonas, Gonium, Eudorina, Pandorina, volvox.
 Jar for class of 30, set 22.00

L0053 MIXED FLAGELLATES: A mixture of five or more forms, our choice, from above list.
 Jar for class of 30, each 8.15
 Four or more jars, each 6.20

L0054 SET OF CILIATES: Comprehensive set of seven individual cultures, our choice, from list of: Blepharisma, Didinium, Spirostomum, Stentor, Vorticella, P. caudatum, P. Multimicronucleatum, P. aurelia, P. bursaria.
 Jar for class of 30, set 32.00

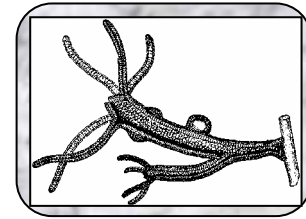
L0055 MIXED CILIATES: A mixture of five or more forms, our choice, from above list.
 Jar for class of 30, each 9.70
 Four or more jars, each 7.35

L0056 FLAGELLATE AND CILIATE MIXTURE: A mixed culture containing five or more forms, our choice, from above list.
 Jar for class of 30, each 11.15
 Four or more jars, each 8.45

OTHER PHYLA



L0071 ROTIFERS: Mixed genera as available.
 Jar for class of 30, each 5.20
 Four or more jars, each 4.00



L0081 GREEN HYDRA: Chlorohydra viridissima. Green in color due to presence of the green alga, Zoochlorella, an excellent example of symbiosis.
 Jar for class of 30, each 7.90
 Four or more jars, each 6.00

L0084 BUDDING HYDRA: Available during the fall months and usually the rest of the year.
Please allow 10 days.
 Jar for class of 30, each 6.55
 Four or more jars, each 6.10

L0085 BROWN HYDRA: Most commonly used coelenterate.
 Jar for class of 30, each 6.40
 Four or more jars, each 6.00

L0087 MIXED HYDRA: Both green and brown hydra in one culture jar for comparative study.
 Jar for class of 30, each 7.40
 Four or more jars, each 6.70

L0088 HYDRA WITH FOOD: Sufficient Daphnia are supplied in separate jar for feeding.
 Jar for class of 30, set 9.00
 Four or more sets, each 8.15

L0100 BROWN PLANARIA: Large size. An instruction leaflet on the care and feeding of Planaria is sent with each shipment.
 Jar for class of 30, each 5.60
 Four or more jars, each 5.15

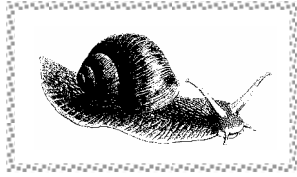
L0120 TURBATRIX ACETI: The vinegar eel. Culture contains both male and female worms.
 Jar for class of 30, each 5.20
 Four or more jars, each 4.00

L0250 EARTHWORMS: Lumbricus. Night crawlers, large mature specimens.
 10 (minimum quantity) or more, each .55
 25 or more, each .48
 100 or more, each .34

L0256 LEECHES: Size as available, generally about 1".
 3 (minimum quantity) or more, each 3.75
 25 or more, each 3.20

L0260 FRESH – WATER CLAMS: Excellent for use with stereo microscope as the ciliary action of the gills is clearly seen.
 10 (minimum quantity) or more, each .90

- L0261 FRESH – WATER MUSSELS:** Will average about 1-2". Species as available.
- | | |
|------------------------------------|------|
| 5 (minimum quantity) or more, each | 1.90 |
| 10 or more, each | 1.65 |



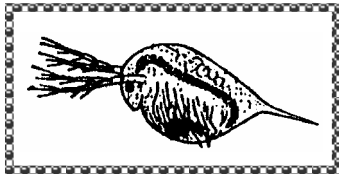
- L0263 POND SNAILS:** Largest available.
- | | |
|-------------------------------------|-----|
| 10 (minimum quantity) or more, each | .65 |
| 25 or more, each | .50 |
| 100 or more, each | .40 |

- L0267 HELIX:** This land snail (USDA and / or State Department of Agriculture permits may be required for interstate shipment. **Please check your State's requirements prior to ordering.**)
- | | |
|-------------------------------------|-----|
| 10 (minimum quantity) or more, each | .65 |
| 25 or more, each | .55 |
| 100 or more, each | .40 |

BRINE SHRIMP EGGS: Excellent source of food for hydra, fish and other aquatic organisms. With instructions.

- | | |
|---------------------------|-------|
| L0277 7- gram vial | 3.50 |
| L0278 50- gram jar | 10.70 |

- L0279 BRINE SHRIMP HATCHERY:** A self-contained unit complete with eggs, salt, and instructions for raising brine shrimp, to feed hydra and tropical fish. Requires air pump (not included). Call for pump: required.
- | | |
|------|-------|
| Each | 15.00 |
|------|-------|



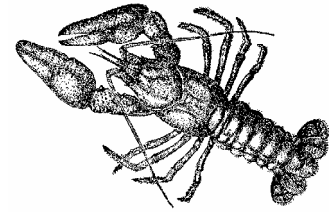
- L0280 DAPHNIA:** Excellent freshwater crustacean for viewing heartbeat and live birth.
- | | |
|---------------------------|------|
| Jar for class of 30, each | 5.80 |
| Four or more jars, each | 4.60 |

- L0280M DAPHNIA MAGNA:** A larger Daphnia.
- | | |
|---------------------------|------|
| Jar for class of 30, each | 6.75 |
| Four or more jars, each | 5.95 |

- L0282 AMPHIPODS: Gammarus,** or similar.
- | | |
|---------------------------|------|
| Jar for class of 30, each | 5.80 |
| Four or more jars, each | 4.60 |

- L0284 COPEPODS: Cyclops,** or other as available.
- | | |
|---------------------------|------|
| Jar for class of 30, each | 5.80 |
| Four or more jars, each | 4.60 |

- L0290 OSTROCODS:** Small crustacean with bivalved carapace.
- | | |
|---------------------------|------|
| Jar for class of 30, each | 5.80 |
| Four or more jars, each | 4.60 |



- L0295 SOUTHERN CRAYFISH:** Size and availability dependent upon collecting conditions.
- | | |
|------------------------------------|------|
| 3 (minimum quantity) or more, each | 2.95 |
| 10 or more, each | 2.05 |
| 25 or more, each | 1.90 |

- L0297 CRAYFISH BREEDING KIT:** Set of six crayfish: four female, two male, with breeding instructions.
- | | |
|----------|-------|
| Each kit | 16.00 |
|----------|-------|

- L0302 LAND HERMIT CRAB:** Natural-shelled tree crab.
- | | |
|------------------------------------|-----|
| 3 (minimum quantity) or more, each | --- |
| 10 or more, each | --- |

- L0305 ISOPODS:** Sowbug or pillbug as available, field collected.
- | | |
|-------------------------------------|-----|
| 25 (minimum quantity) or more, each | .30 |
| 50 or more, each | .25 |
| 100 or more, each | .20 |

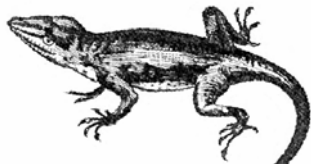
- L0314 CRICKETS:** The common gray or house cricket.
- | | |
|-------------------------------------|-----|
| 25 (minimum quantity) or more, each | .18 |
| 50 or more, each | .15 |
| 100 or more, each | .12 |

- L0315 TENEBRIO LARVAE:** Mealworms. An excellent source of food for aquarium or terrarium animals.
- | | |
|-------------------------------------|-----|
| 25 (minimum quantity) or more, each | .10 |
| 100 or more, each | .05 |
| 500 or more, each | .04 |
| 1000 or more, each | .03 |

- L0316 TENEBRIO PUPAE:**
- | | |
|-------------------------------------|-----|
| 10 (minimum quantity) or more, each | .45 |
| 25 or more, each | .40 |

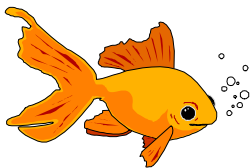
- L0317 TENEBRIO BEETLES:** Adult mealworms.
- | | |
|-------------------------------------|-----|
| 10 (minimum quantity) or more, each | .57 |
| 25 or more, each | .50 |

- L0320 BOMBYX MORI EGGS:** Silkworm moth eggs are an excellent teaching aid for the study of insect metamorphosis. **(Please locate your own source of fresh mulberry leaves before ordering.)** Hatching takes 10 to 30 days.
- | | |
|-----------------------|-------|
| Jar of 100 eggs, each | 15.00 |
| Eggs with guide | 20.00 |



L0337 ANOLIS CAROLINENSIS: "Chameleon"
 Generally available except in winter months.
 (Allow 2 weeks.)
 3 (minimum quantity) or more, each 5.50
 10 or more, each 4.00

L0339 GUPPIES: Adult and large immature fish in each shipment. Not sexed.
 6 (minimum quantity), each .50
 7-24, each .45
 25-49, each .40
 50-99, each .35
 100 or more, each ---



L0342 GOLDFISH: Small comets.
 6 (minimum quantity), each .50
 7-49, each .40
 50 or more, each .30

CULTURING MEDIA AND AIDS

LMS02 METHYL CELLULOSE SOLUTION: A 1.5% solution of methyl cellulose to slow Protozoa for better observation.
 1 oz dispensing bottle 3.75

LMS30 CULTURE WATER: Our own specially formulated water used in all our protozoan cultures. Equally useful in maintaining Planaria and other aquatic forms. Superior to most natural water as the chemical composition is always constant.
 Quart 2.00
 Gallon 5.00

LMS31 POND WATER:
 Gallon 10.00

LMS32 PROTOZOA CULTURING SET: Consists of one gallon of culture water, a vial of wheat seeds, a vial of rice, and a package of timothy hay. A wide variety of Protozoa may be cultured with these items.
 Each set 7.50

LMS43 CONGO RED AND YEAST: Ready to mix with water for feeding ciliates in order to show vacuoles.
 5 grams, Each 4.00

FROGS & TOADS

(Please order 10 days prior to use date.)



L0350 GRASS FROGS: Rana pipiens. Large, 3 to 3.5" body length. (Grass frogs are scarce during early Spring months.)
 5 (minimum quantity) or more, each 5.50
 10 or more, each 5.00

L0351 GRASS FROGS: Rana pipiens. Medium, 2.5 to 3.0" body length. (Grass frogs are scarce during early Spring months.)
 5 (minimum quantity) or more, each 4.50
 10 or more, each 4.00

L0355 BULLFROGS: Giant. 6" plus body length.
 3 (minimum quantity) or more, each 19.75
 5 or more, each 18.75
 10 or more, each 17.75

L0356 BULLFROGS: Large. 5" to 6" body length.
 3 (minimum quantity) or more, each 17.50
 5 or more, each 16.50
 10 or more, each 15.00

L0357 BULLFROGS: Medium. 4" to 5" body length.
 3 (minimum quantity) or more, each 14.75
 5 or more, each 13.75
 10 or more, each 12.00

L0358 BULLFROGS: Small. 3" to 4" body length.
 3 (minimum quantity) or more, each 9.50
 5 or more, each 8.50
 10 or more, each 7.50

L0367 FIRE-BELLIED TOADS: Characterized by flame red underside. Excellent terrarium size.
 (Available during Spring months.)
 3 (minimum quantity) or more, each ---
 5 or more, each ---
 10 or more, each ---

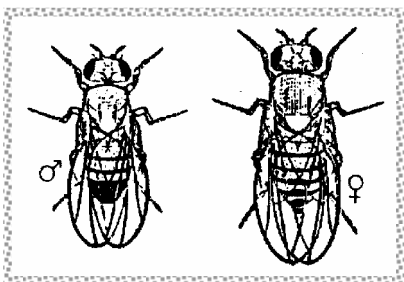
L0370 TAD POLES
 Each Clump ---

L0372 FROG EGGS: Available in spring months only.
 Each Clump ---

OTHER AMPHIBIANS

- L0403 **FIRE – BELLIED NEWTS:** Adapt well to terrarium. Available in spring months. (Allow 10 days for delivery.)
- | | |
|------------------------------------|-----|
| 3 (minimum quantity) or more, each | --- |
| 5 or more, each | --- |
| 10 or more, each | --- |

DROSOPHILA



When ordering, please allow 14 days for mating egg-laying, and development of the larvae. Cultures will then reach your laboratory with the pupae ready to hatch. Please indicate usage date desired.

CULTURES OF FLIES listed below are supplied in 1.25 x 4" shatterproof plastic vials.

Each vial	7.50
-----------	------

- | | | |
|-------|-------------------|---|
| L0700 | WILD: | Red eye. |
| L0720 | WHITE: | Recessive; eye color white with colorless ocelli. |
| L0746 | APTEROUS: | Wingless. |
| L0760 | VESTIGIAL: | Recessive; wings and balancers greatly reduced. |

PLEASE CALL FOR OTHER TYPES

DROSOPHILA CULTURE AIDS

INSTANT DROSOPHILA MEDIUM: A complete, ready-to-use medium in dry form. Add water, mix, and inoculate. Contains all necessary nutrients and mold inhibitor.

- | | | |
|-------|--|-------|
| LMS45 | 1 liter pack, enough for about 60 vials | 7.00 |
| LMS46 | 4 liter pack, enough for about 240 vials | 17.00 |

- | | | |
|-------|---|-----|
| LMS56 | DROSOPHILA VIAL: Clear, shatterproof plastic, 1.5 x 4". Without plugs or caps. | |
| | 10 (minimum quantity) or more, each | .35 |
| | 100 or more, each | .30 |

- | | | |
|-------|---|-----|
| LMS57 | CAPS: Plastic, for vials – LMS56 | |
| | 10 (minimum quantity) or more, each | .20 |
| | 100 or more, each | .15 |

- | | | |
|-------|--|-----|
| LMS59 | PLUGS: Autoclavable foam plugs for vials – LMS56. | |
| | 10 (minimum quantity) or more, each | .20 |
| | 100 or more, each | .15 |

BACTERIA

Our listing of nonpathogenic bacteria covers those organisms most commonly studied in general biology courses. Cultures are supplied on agar slants and also on culture plates where indicated.

Allow 7 days notice for shipment.

NOTE: Although these cultures are relatively harmless, all bacteria should be handled as pathogens. We are not responsible for infections arising from the use of our materials.

- | | |
|-----------------------------------|------|
| Tube Cultures listed below, each | 7.50 |
| Plate Cultures listed below, each | 8.95 |

- | | |
|--------|------------------------------|
| LB0020 | BACILLUS CEREUS |
| LB0038 | BACILLUS SUBTILIS |
| LB0055 | ESCHERICHIA COLI |
| LB0083 | RHODOSPIRILLUM RUBRUM |
| LB0088 | MICROCOCCLUS LUTEUS |
| LB0092 | SERRATIA MARCESCENS |

PLEASE CALL FOR MORE BACTERIA LIST

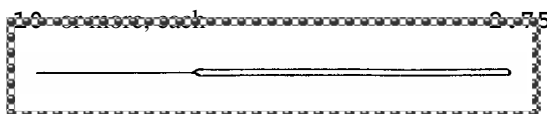
BACTERIA CULTURE AIDS

PLASTIC DISPOSABLE PETRI DISHES: Polystyrene; sterile 100mm diameter x 15mm high.

- | | | |
|--------|--------------|------|
| 3F3515 | Sleeve of 20 | 6.00 |
| 3F3516 | Case of 500 | --- |

NICHROME INOCULATING LOOP: Aluminum handle with 3mm loop on 75mm, 25 gauge wire. Handle length is 200mm.

- | | | |
|--------|------|------|
| 3A0870 | Each | 3.10 |
|--------|------|------|



NICHROME NEEDLE: Aluminum handle with 75mm, 24 gauge wire. Handle length is 200mm

- | | | |
|--------|------------------|------|
| 3A0874 | Each | 3.10 |
| | 10 or more, each | 2.75 |

NUTRIENT AGAR: Sterile, ready-to-use medium. Four oz bottle, sufficient for 5-7 plates.

4N0332	4 oz, each	4.50
4N0334	Six or more, each	4.00
4N0336	Prepared Nutrient Agar Plates	1.99

MYXOMYCOTA (Slime molds)

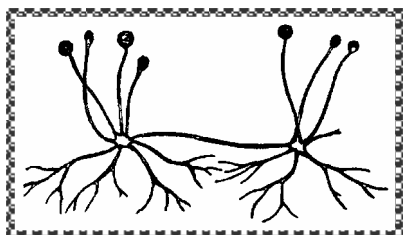
LB0130 PHYSTARUM POLYCEPHALUM: An actively growing portion of the diploid thallus (plasmodium) is supplied. Usually the bright yellow plasmodium has moved out sufficiently for observation of streaming under a dissecting microscope.
Each 7.50

LB0134 PHYSTARUM POLYCEPHALUM, SCLEROTIA: Pieces of viable, inactive state of plasmodium packed in vials, several pieces per vial. Includes instruction sheet for reviving plasmodium and maintaining resulting culture.
Each 7.50

EUMYCOTA (Fungi)

PLEASE ALLOW 14 DAYS NOTICE FOR SHIPMENT

LB0143 SAPROLEGNIA: This popular "water mold" is supplied in liquid culture.
Each 5.95



LB0146 MUCOR: Plus Strain. This terrestrial Phycomycete is preferred to *Rhizopus* as *Mucor* does not tend to become the laboratory contaminant that *Rhizopus* does when handled by the elementary student. Useful for showing asexual reproduction.
Tube culture. Each 7.50

LB0153 PHYCOMYCES: Plus Strain. Tube culture.
Each 7.50

LB0158 RHIZOPUS: Plus Strain. The common black bread mold. Tube culture.
Each 7.50

LB0163 SACCHAROMYCES: Culture of the common baker's yeast which reproduces by budding. Tube culture.
Each 7.50

LB0168 PENICILLIUM: Member (usually *P. notatum*) of the form genus *Penicillium*. Useful to show the chains of conidia borne on the characteristic branching conidiophores. Tube culture.
Each 7.50

LB0172 ASPERGILLUS: Usually *A. Niger* is supplied to show the typical conidial heads of the mold. Tube culture.
Each 7.50

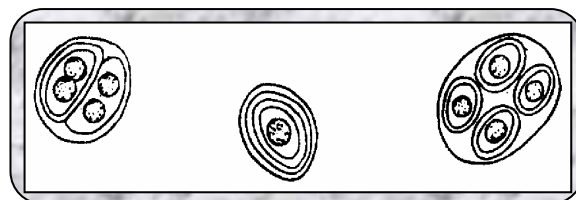
LICHENS

LB0199 LICHEN COLLECTION: Set of three types of lichens (crustose, fruticose, and foliose) in a dried state. Supplied when possible on the natural substrate.
Each 13.95

ALGAE

Most major phyla are represented in our stocks of living algae. Reproductive structures are sent when available. All algae are shipped, unless otherwise stated, as liquid cultures in small jars.

CYANOBACTERIA (Blue-Green algae)



LB0205 GLOEOCAPSA: Colonies of new spherical cells within a layered sheath.
Jar for class of 30, each 5.30
Four or more jars, each 4.05

LB0225 OSCILLATORIA: An unbranched filaments which is quite popular for showing "gliding movement" of the blue-greens.
Jar for class of 30, each 5.30
Four or more jars, each 4.05

LB0230 ANABAENA: Intertwined, sheathed filaments of spherical or barrel-shaped cells. Akinetes are often found adjacent to the intercalary heterocysts.
Jar for class of 30, each 5.30
Four or more jars, each 4.05

LB0235 NOSTOC: Colonies of often contorted filaments. Intercalary heterocysts are common.
Jar for class of 30, each 5.30
Four or more jars, each 4.05

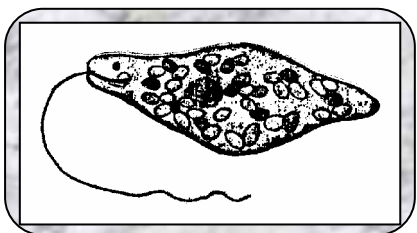
CHRYSOPHYTA

(Golden-Browns, Yellow-Greens, and Diatoms)

- LB0309 VAUCHERIA:** Coenocytic, branching filaments which develop transverse septa to wall off injured or reproductive areas.
Jar for class of 30, each 5.30
Four or more jars, each 4.05
- LB0375 DIATOMS:** A mixture of diatoms.
Jar for class of 30, each 5.30
Four or more jars, each 4.05
- LB0376 DIATOM AND DESMID MIXTURE:**
Jar for class of 30, each 5.30
Four or more jars, each 4.05

RHODOPHYTA (Red Algae)

EUGLENOPHYTA



- LB0625 EUGLENA:** Fusiform cells which often change shape while swimming. The single flagellum, reddish eyespot, and paramylum bodies are usually clearly visible.
Jar for class of 30, each 5.30
Four or more jars, each 4.05

CHLOROPHYTA (Green Algae)

- LB0700 CHLAMYDOMONAS:** Solitary, biflagellated cells with cup-shaped chloroplasts.
Jar for class of 30, each 5.30
Four or more jars, each 4.05
- LB0701 CHLAMYDOMONAS MATING:** Set of fresh agar cultures of plus and minus strains of Chlamydomonas (7 days notice required) To observe syngamy during a class period, a washing and photoperiod is required about 6 hours prior to class time. Because of the preparation, order on set of cultures per laboratory period to arrive a day before use. One set serves up to 100 students.
Each set 15.50
- LB0703 CARTERIA:** Similar to Chlamydomonas except it has four flagellae rather than two.
Jar for class of 30, each 5.30
Four or more jars, each 4.05

- LB0705 GONIUM:** Flat, plate-like colonies of 4 to 32 biflagellated Chlamydomonas-like cells.
Jar for class of 30, each 5.30
Four or more jars, each 4.05

- LB0710 PANDORINA:** Subspherical colonies of 4 to 32 biflagellated, Chlamydomonas-like cells.
Jar for class of 30, each 5.30
Four or more jars, each 4.05

- LB0715 EUDORINA:** Spherical colonies of 16 to 64 biflagellated cells. Eudorina colonies tend to be more open than those of Pandorina.
Jar for class of 30, each 5.30
Four or more jars, each 4.05

- LB0725 VOLVOX:** Each motile colony is a hollow sphere of 500 to 50,000 biflagellated cells. Only some posterior cells are reproductive, giving rise to new colonies or gametes.
Jar for class of 30, each 5.30
Four or more jars, each 4.05

- LB0730 VOLVOCALES SERIES:** A collection of four algae in individual jars, including Pandorina or Eudorina, Chlamydomonas, and Volvox.
Jar for class of 30, set 16.30

- LB0740 ULOTHRIX:** Unbranched filaments of cells. Each cell has one girdle-shaped chloroplast.
Jar for class of 30, each 5.30
Four or more jars, each 4.05

- LB0772 OEDOGONIUM:** Unbranched filaments of cells. Each cell has a single reticulate chloroplast. A unique method of cell division results is the formation of "apical caps" at the end of some cells. Sexual reproductive structures included when available.
Jar for class of 30, each 5.30
Four or more jars, each 4.05



- LB0777 ZYGNEMA:** Each cylindrical cell of the unbranching filament contains two stellate chloroplasts.
Jar for class of 30, each 5.30
Four or more jars, each 4.05



- LB0779 SPIROGYRA:** An unbranched filamentous genus, popular because of the one or two spiral chloroplasts per cell.
Jar for class of 30, each 5.30
Four or more jars, each 4.05



LB0784 CLOSTERIUM: A crescent-shaped desmid lacking a median constriction.
Jar for class of 30, each 5.30
Four or more jars, each 4.05

LB0786 COSMARIUM: Unicellular desmid distinctly divided into two subcircular semicells by a median constriction.
Jar for class of 30, each 5.30
Four or more jars, each 4.05

LB0792 DESMIDIUM: A filamentous desmid. Individual cells of the unbranched filament lack a deep median constriction.
Jar for class of 30, each 5.30
Four or more jars, each 4.05

LB0795 MIXTURE OF DESMIDS: Mix of four genera of desmids, our choice, including, when possible, Desmidium, a saccoderm desmid (Mesotaenium or Netrium), and two solitary placoderm desmids.
Jar for class of 30, each 6.30
Four or more jars, each 4.90

LB0815 CHLORELLA: Small spherical cells.
Jar for class of 30, each 5.30
Four or more jars, each 4.05

LB0831 MIXED ALGAE: Five algae (our choice) mixed in one jar.
Jar for class of 30, each 6.30
Four or more jars, each 4.90

COLLECTION OF ALGAE: Representative collection from major phyla of algae, each in individual jars. Our choice of cultures.

LB0850 Six-jar set 27.15
LB0851 Twelve-jar set 48.00

BRYOPHYTA (Liverworts and Mosses)



LB0905 MARCHANTIA: Vegetative: A generous portion of the gametophyte thallus is supplied with gemmae cups whenever available.
Unit for class of 30, each 6.50

LB0915 LIVERWORT: Other than Marchantia, (Pelia ordinarily supplied).
Unit for class of 30, each 6.50

WOODLAND MOSS: Clumps, suitable for the terrarium.

LB0925 3-4" clump, each 4.15
LB0926 6 clumps 21.55

LB0930 REPRESENTATIVE MOSSES: Three types, for laboratory study.
Unit for class of 30, each 9.50

LB1309 DUCKWEED: (Lemna) Small floating plants.
Two oz jar 4.85



LB1312 ELODEA: (Anacharis) Useful for general study or as a floating or rooted aquarium plant.
1-3 dozen, per dozen 5.60
4-7 dozen, per dozen 4.75
8 or more dozen, per dozen 3.50

LB1318 SAGITTARIA: A rooted aquarium plant with long leaves.
Unit of 10 plants, each 8.25
4 or more units, each 7.75

LB1321 AZOLLA: A floating fern for the aquarium.
Two oz jar 5.50



LB1324 UNDERWATER BANANA PLANT: Features a unique bunch of roots, shaped like bananas.
Each ---
10 or more plants, each ---



LB1325 VALLISNERIA: (eel grass): An aquarium plant with long, narrow leaves.
Unit of 10 plants, each 7.15



LB1326 CORKSCREW VALLISNERIA: Similar to above, with leaves showing spiral growth.
Unit of 10 plants, each 7.15